

JANUARY

SUN	MON	TUE	WED	THU	FRI	SAT
	1	2	3	4	5	6
7	8	9	10	11	12	13
14	15	16	17	18	19	20
21	22	23	24	25	26	27
28	29	30	31			

FEBRUARY

SUN	MON	TUE	WED	THU	FRI	SAT
				1	2	3
4	5	6	7	8	9	10
11	12	13	14	15	16	17
18	19	20	21	22	23	24
25	26	27	28	29		



MARCH

SUN	MON	TUE	WED	THU	FRI	SAT
					1	2
3	4	5	6	7	8	9
10	11	12	13	14	15	16
17	18	19	20	21	22	23
24	25	26	27	28	29	30
31						

APRIL

SUN	MON	TUE	WED	THU	FRI	SAT
	1	2	3	4	5	6
7	8	9	10	11	12	13
14	15	16	17	18	19	20
21	22	23	24	25	26	27
28	29	30				

4 - Bee's Knees Social Club

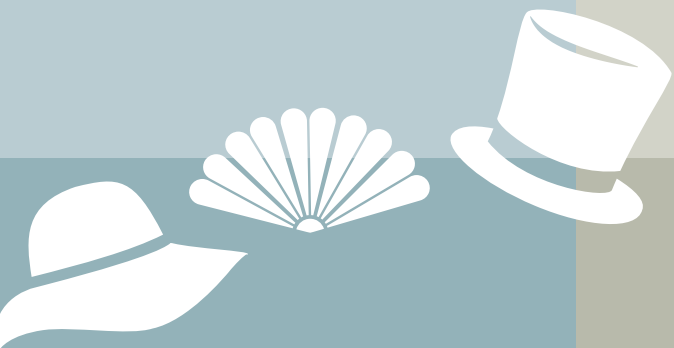
MAY

SUN	MON	TUE	WED	THU	FRI	SAT
			1	2	3	4
5	6	7	8	9	10	11
12	13	14	15	16	17	18
19	20	21	22	23	24	25
26	27	28	29	30	31	

8 - Rock 'N Race
20 - Laconia Golf Classic

JUNE

SUN	MON	TUE	WED	THU	FRI	SAT
						1
2	3	4	5	6	7	8
9	10	11	12	13	14	15
16	17	18	19	20	21	22
23	24	25	26	27	28	29
30						



JULY

SUN	MON	TUE	WED	THU	FRI	SAT
	1	2	3	4	5	6
7	8	9	10	11	12	13
14	15	16	17	18	19	20
21	22	23	24	25	26	27
28	29	30	31			

AUGUST

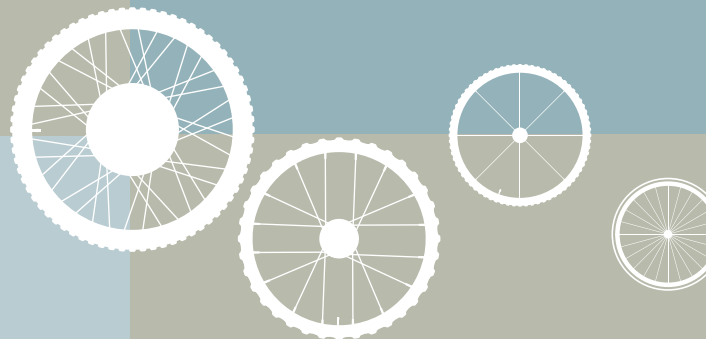
SUN	MON	TUE	WED	THU	FRI	SAT
				1	2	3
4	5	6	7	8	9	10
11	12	13	14	15	16	17
18	19	20	21	22	23	24
25	26	27	28	29	30	31

12 - Challenge Scramble Golf Tournament

SEPTEMBER

SUN	MON	TUE	WED	THU	FRI	SAT
1	2	3	4	5	6	7
8	9	10	11	12	13	14
15	16	17	18	19	20	21
22	23	24	25	26	27	28
29	30					

7 - Pedaling for Payson
22 - Bridge to Recovery Walk



OCTOBER

SUN	MON	TUE	WED	THU	FRI	SAT
	1	2	3	4	5	
6	7	8	9	10	11	12
13	14	15	16	17	18	19
20	21	22	23	24	25	26
27	28	29	30	31		

NOVEMBER

SUN	MON	TUE	WED	THU	FRI	SAT
					1	2
3	4	5	6	7	8	9
10	11	12	13	14	15	16
17	18	19	20	21	22	23
24	25	26	27	28	29	30



DECEMBER

SUN	MON	TUE	WED	THU	FRI	SAT
1	2	3	4	5	6	7
8	9	10	11	12	13	14
15	16	17	18	19	20	21
22	23	24	25	26	27	28
29	30	31				

2024 Join us!

April

Bee's Knees Social Club

Thursday, April 4, 6:30 pm
Church Landing at Mill Falls, Meredith

Proceeds from the Bee's Knees Social Club will support the Concord Hospital health system with maternity care, pre & post-natal OB/GYN patient care through programs, services and capital enhancements in the Capitol, Lakes and Three Rivers regions of Central New Hampshire. Don't be a *pill* and miss getting all *dolled up* to get transported back to the *Jazz Age*. Enjoy tasty eats and prepare to *cut a rug* at this can't-miss event because it'll be the *cat's pajamas*!

May

Rock 'N Race

Wednesday, May 8, 6:00 pm
NH State House, Concord

Thousands of participants will run/walk a 5K or walk a 1-mile loop through downtown Concord while enjoying live music from bands playing along the way. Funds raised by this beloved event, now in its 22nd year, benefit important programs and services supporting cancer patients and their families at Concord Hospital Payson Center for Cancer Care.

Laconia Golf Classic

Monday, May 20, 12:00 pm
Laconia Country Club

Proceeds from the Laconia Golf Classic will support emergency services in the Lakes and Three Rivers regions. Kick off the day with a Registration BBQ, hit the links and network with business leaders and donors, all culminating in a post-play awards reception.

August

Challenge Scramble Golf Tournament

Monday, August 12, 9:00 am
Concord Country Club

Proceeds from the Challenge Scramble Golf Tournament will support emergency services. Hit the links and enjoy a day of golf, networking with business leaders and donors, take a chance on the raffles, all culminating in an awards and BBQ celebration.

September

Pedaling for Payson

Saturday, September 7, 8:00 am
Elm Brook Park, Hopkinton

All funds raised support Concord Hospital Payson Center for Cancer Care's Nurse Navigator program and the Pedaling for HOPE Fund, which provides funds for out of pocket expenses for patients in need. P4P hosts road ride enthusiasts and adventurous mountain and gravel bikers, all in varying distances. The 19th annual ride culminates with live entertainment and a BBQ lunch.

Bridge to Recovery Walk

Sunday, September 22, 9:00 am
Concord Hospital - Franklin

Together, let's raise awareness and funds for the patients, programs, and services of the Concord Hospital Recovery Clinic at Concord Hospital, Laconia and Franklin campuses. Come out and show support for family, friends, and neighbors struggling with, or recovering from mental health disorder and/or substance use disorder.

